

**Announcement for Public tender
(Importation)
First time announcement**

Sub. / Tender No. Tender No.1 /WOL-3/2018

**((Supply Complete Production Line for Embossed Raschel Blanket
Of Western European origin with installation, operation and training))

((Annual Capacity (200000) Blanket))**

(The General Company for Textile and leather Industries /Woollen factory) is pleased to invite the qualified and experienced bidders to submit their bids to (supplying, Complete Production Line for Embossed Raschel Blanket Of Western European origin with installation, operation and training and note the following:

1. The qualified bidders who want to obtain additional information shall call (The **Woollen factory**) (every day from 8:00 AM till 2:00 PM Except of Fridays and official local holidays) as shown in the instructions to bidders.
2. Interested bidders can buy bid documents, after submitting written request to the address specified in the bid data sheet, and after paying the selling value of documents amounts to (150.000 I.D) One hundred and fifty thousand Iraqi Dinars (not repayable).
3. The bids are delivered to the following address
(Woollen Factory in Baghdad – Kadhumiya, Korneish Al-Kadhumiya near Abdu-Almohssen Al-Kadhumi square till (12:00 PM of 20/2/2018).Which consider the closing date. Late bids after this date will be rejected, and the bids will be opened by the attendance of the bidders or their representatives. Attendance shall be at the following address (Meeting Hall/ 2end floor at the Woollen Factory) after 12:00PM of 20/2/2018.

The estimated cost for this project is **4100000000 (Four billion and one hundred million Iraqi dinars)** Or Equivalent to US dollars and according to the bulletin of the Central Bank of Iraq when opening bids.

- The specifications of the production line can be found on the Woollen Factory sites:

www.scwi.gov.iq

www.facebook.com/woollenindustries

Or the Ministry's website:

www.industry.gov.iq



Ahmed Abd Allah Najem

Director General

14/1/2018

Supply Complete Production Line for Embossed Raschel Blanket Of Western European origin with installation, operation and training Annual Capacity (200000) Blanket

INTRODUCTION :

This tender represents to establish a new production line for Embossed Raschel blankets made from polyester filaments yarns without wet printing line .

The tender does not exactly specify the machines or the technology and leaves the door wide open for your suggestions / proposals which fits the final product specification specially about dry printing.

Purpose:-

1. It is required to supply, install and operate a complete production line for embossed raschel blanket without our existing finishing machine as following below :
 - Raising , polishing - shearing machine (details of specification in attachment 1)
 - Cutting of blankets and sewing of ribbons (details of specification in attachment 1)

To produce blanket (one layer 2 ply) made from polyester filament yarns with target annual capacity 200000 blanket at (240 days/year , 10 hour/day) to produce blanket fabrics with the following specifications :

- Width : 1600mm – 2400mm
- Length : 2200mm-2400mm
- Weight : from 400gm./m² to 1000 gm./m² .
- Material : Polyester Filament Yarns
- Electrical supply : 3 Phase ,400 V , 50 Hz

2. supply required raw material for operation 3-months with all detailed specification (technical specification)

attachment (1)

Specification of raising , shearing and sewing machines:-

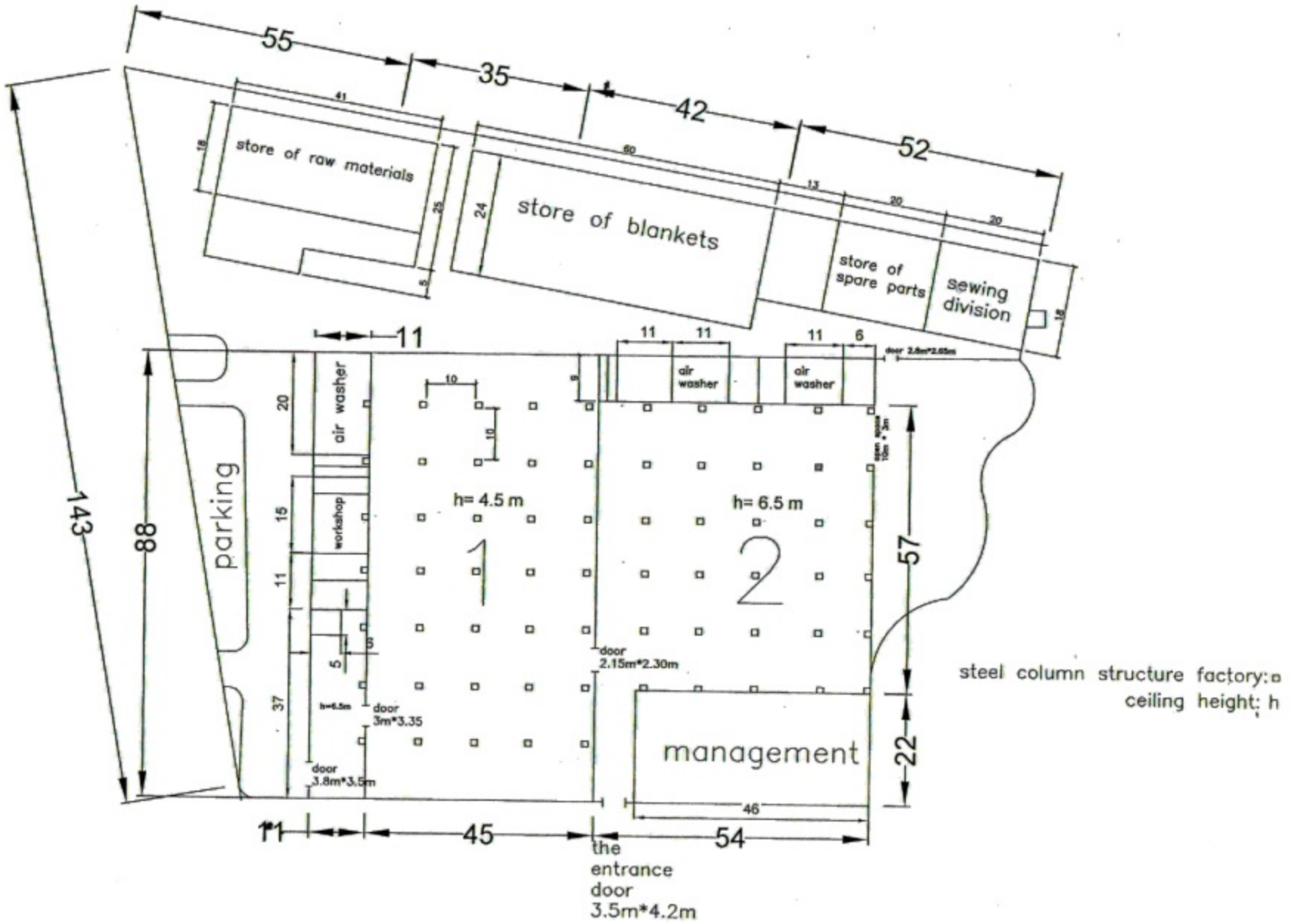
- 1-Raising machine(Mario Crosta) MC 10/30 working width =2600mm, No. Cylinders =30, Quantity=2
- 2-Shearing Machine XPS+T (Xetma) Working Width=2600mm, Quantity =2.
- 3-Sewing Machines (Kansai special) Model type =WX-8803D , Quantity =7.
- 4-Over lock Sewing Machines (Merrow model :72-D3B-2R Quantity =2),(Montimac model (TU-03 V380 , Quantity =1).
- 5-Cutting of blankets ,Q=2

Offer Should Specify And/Or Include:

1. Full details of the offered machines, which should be brand new and quality machines equipped with the latest technologies.
2. To list (with price) all optional equipment/machines and utilities needed to complete/complement the production process to produce quality products.
3. You will be responsible for designing this production section machines layout consider the available layout diagram as shown in attachment (2) (if you are the winning bid).
4. You will responsible to give us detailed recommendation for the (specification/ condition)of our existing finishing machine to be suitable for your proposal finishing line for polyester rasch blanket.
5. Supply all raw material for start-up.
6. All utilities, auxiliary/supplementary equipment needed (lifting equipment, cranes trolleys,... Etc.)
7. Training for 20 technicians / operators at your manufacturing facilities.
8. Knowhow documents and layout plans.
9. (3) sets of full operation and maintenance manuals plus CD's copies.
10. A brief information about the advantages of the proposed production line over the competition in terms of the technologies used ,quality and efficiency.
11. Spare parts for two years (mechanical & electrical).

Attachment:-

- Specification available machines of Attachment (1)
- Layout for the available locationAttachment (2)



drawing scale
1:100000